

River Oaks Stormwater Investigation

Structures with or without restrictors

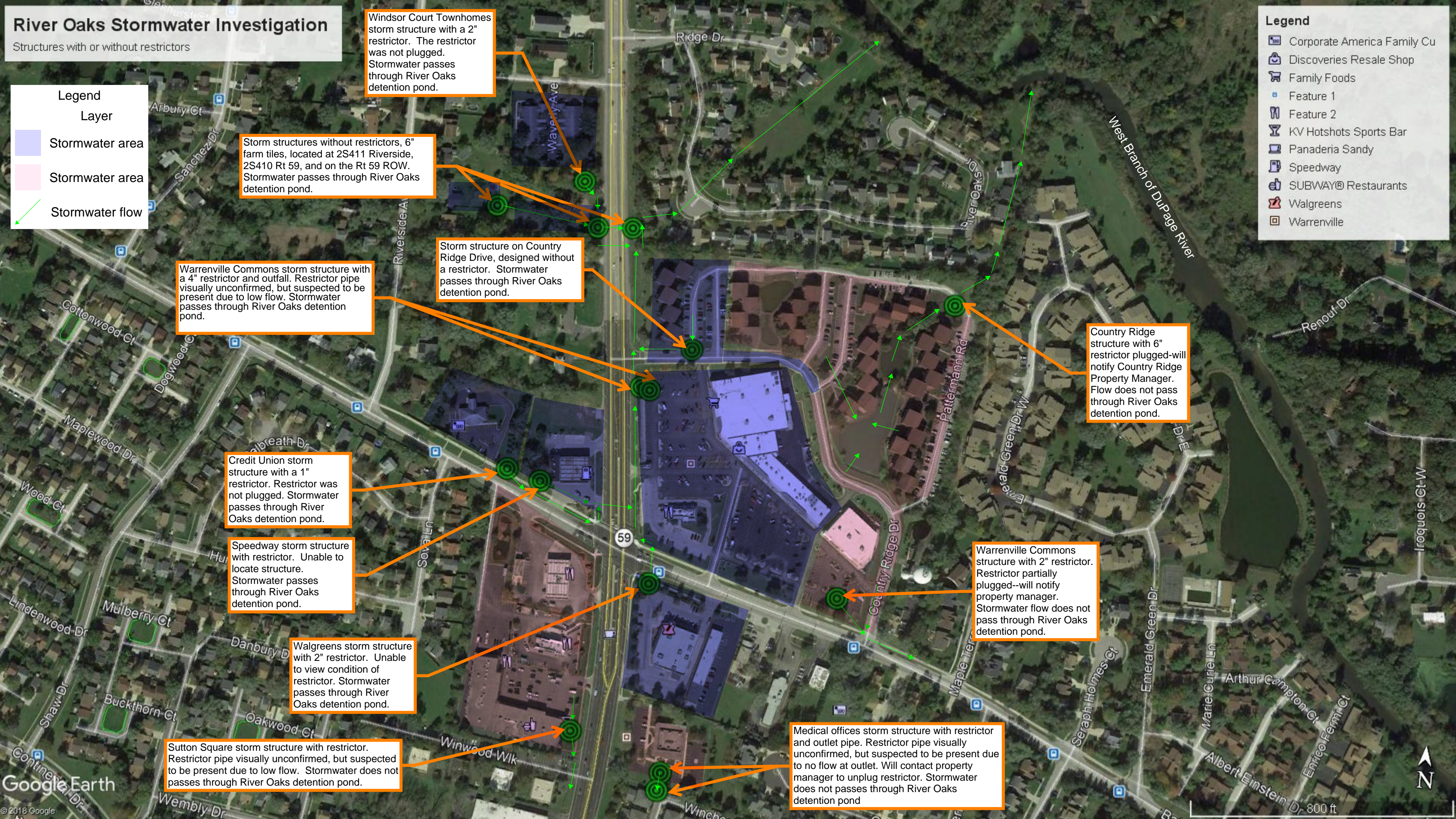
Legend

Layer

- Stormwater area
- Stormwater area
- Stormwater flow

Legend

- Corporate America Family Cu
- Discoveries Resale Shop
- Family Foods
- Feature 1
- Feature 2
- KV Hotshots Sports Bar
- Panaderia Sandy
- Speedway
- SUBWAY® Restaurants
- Walgreens
- Warrenville



Windsor Court Townhomes storm structure with a 2" restrictor. The restrictor was not plugged. Stormwater passes through River Oaks detention pond.

Storm structures without restrictors, 6" farm tiles, located at 2S411 Riverside, 2S410 Rt 59, and on the Rt 59 ROW. Stormwater passes through River Oaks detention pond.

Warrenville Commons storm structure with a 4" restrictor and outfall. Restrictor pipe visually unconfirmed, but suspected to be present due to low flow. Stormwater passes through River Oaks detention pond.

Storm structure on Country Ridge Drive, designed without a restrictor. Stormwater passes through River Oaks detention pond.

Country Ridge structure with 6" restrictor plugged-will notify Country Ridge Property Manager. Flow does not pass through River Oaks detention pond.

Credit Union storm structure with a 1" restrictor. Restrictor was not plugged. Stormwater passes through River Oaks detention pond.

Speedway storm structure with restrictor. Unable to locate structure. Stormwater passes through River Oaks detention pond.

Warrenville Commons structure with 2" restrictor. Restrictor partially plugged-will notify property manager. Stormwater flow does not pass through River Oaks detention pond.

Walgreens storm structure with 2" restrictor. Unable to view condition of restrictor. Stormwater passes through River Oaks detention pond.

Sutton Square storm structure with restrictor. Restrictor pipe visually unconfirmed, but suspected to be present due to low flow. Stormwater does not pass through River Oaks detention pond.

Medical offices storm structure with restrictor and outlet pipe. Restrictor pipe visually unconfirmed, but suspected to be present due to no flow at outlet. Will contact property manager to unplug restrictor. Stormwater does not pass through River Oaks detention pond



800 ft